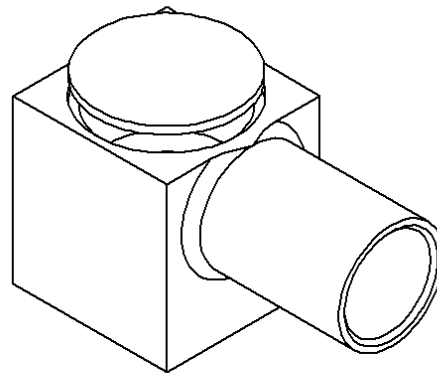
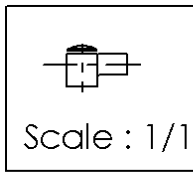
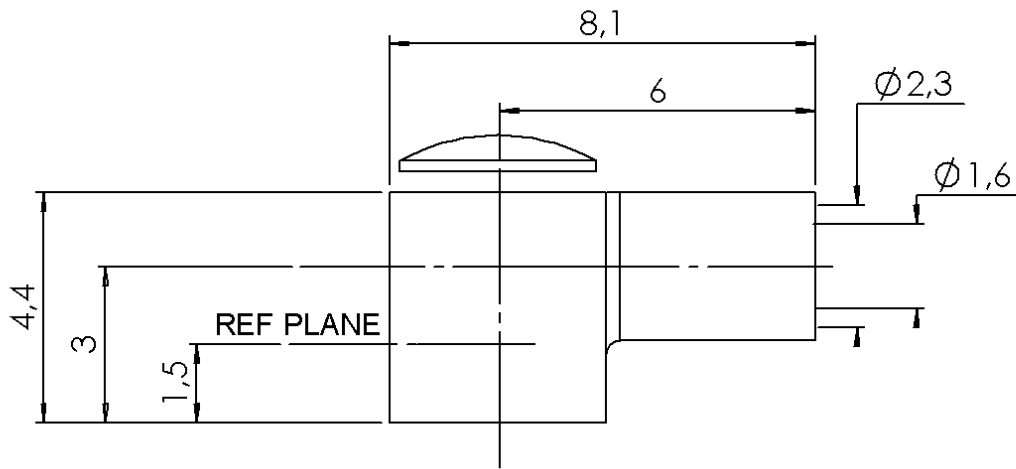


RIGHT ANGLE PLUG CRIMP TYPE
CABLE .085 CONFORMABLE

R209.359.000

Series : MMS



All dimensions are in mm.



COMPONENTS	MATERIALS	PLATING (µm)
BODY	BRASS	NICKEL 2
CENTER CONTACT	BRASS	NICKEL 2
OUTER CONTACT	-	-
INSULATOR	PTFE	-
GASKET	-	-
OTHERS PARTS	-	-
-	-	-
-	-	-

Issue : 0704 B

In the effort to improve our products, we reserve the right to make changes judged to be necessary.



RIGHT ANGLE PLUG CRIMP TYPE

R209.359.000

CABLE .085 CONFORMABLE

Series : MMS

PACKAGING

Standard	Unit	Other
1000	'W' option	Contact us

SPECIFICATION

ELECTRICAL CHARACTERISTICS

Impedance		50 Ω
Frequency		0-6 GHz
VSWR	* +	0,0000 x F(GHz) Maxi
Insertion loss		0.2 \sqrt{F} (GHz) dB Maxi
RF leakage	- (NA - F(GHz)) dB Maxi
Voltage rating		50 Veff Maxi
Dielectric withstanding voltage		250 Veff mini
Insulation resistance		500 MΩ mini

CABLE ASSEMBLY

Stripping	a	b	c	d	e	f
mm	2,70	0,00	0,00	0,00	0,00	0,00

Assembly instruction :

Recommended cable(s)
SUCOFORM 86

Characteristics indicated on this data sheet are those that can be achieved with the highest performance cable. Intrinsic limitations of the cable may diminish the performance of the assembly

Cable retention

- pull off	20 N mini
- torque	NA N.cm

MECHANICAL CHARACTERISTICS

Center contact retention		
Axial force – Mating end	10 N mini	
Axial force – Opposite end	10 N mini	
Torque	NA N.cm mini	

TOOLING

Part Number	Description	Hexagon
.	.	.

Recommended torque		
Mating	NA N.cm	
Panel nut	NA N.cm	
Clamp nut	NA N.cm	
A/F clamp nut	0,0000 mm	

Mating life	50 Cycles mini
Weight	0,4100 g

OTHER CHARACTERISTICS

*1.2 - 2 GHz

ENVIRONMENTAL

Operating temperature	-40/+125 °C
Hermetic seal	NA Atm.cm3/s
Panel leakage	NA

Issue : 0704 B

In the effort to improve our products, we reserve the right to make changes judged to be necessary.



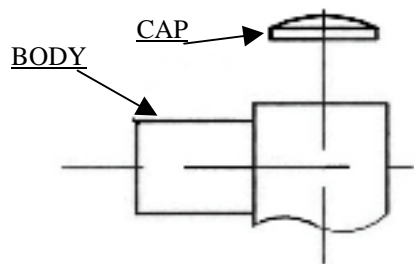
RIGHT ANGLE PLUG CRIMP TYPE

CABLE .085 CONFORMABLE

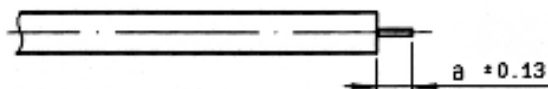
R209.359.000

Series : MMS

COMPONENTS

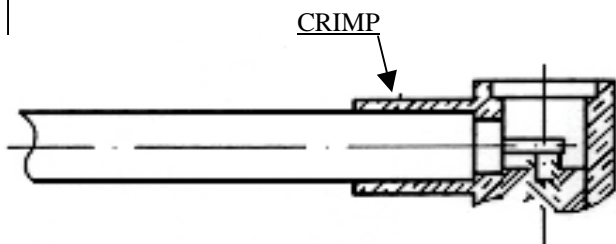


STRIPPING DIMENSIONS



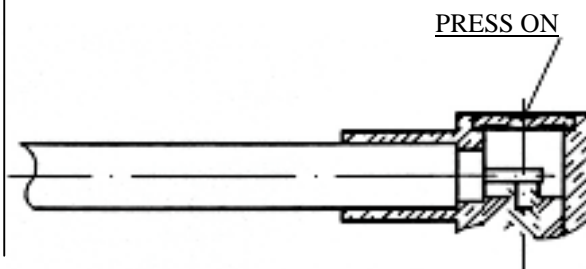
1

Strip the cable
Introduce the cable into the connector body
until contact with the body shoulder
Crimp body on the cable
Hex : 2.44



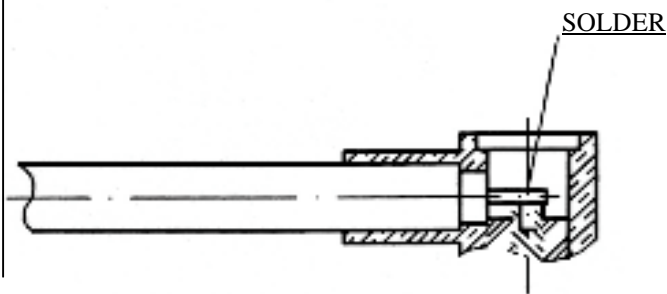
3

Place the cap and press it



2

Solder inner conductor onto the pin
(Electical welding by condenser discharge)



Issue : 0704 B

In the effort to improve our products, we reserve the right to make changes judged to be necessary.

